



**Ministry of Health and Social Services  
Republic of Namibia**

<b>Situational Report No.30 for COVID-19 Namibia</b>			
<b>Outbreak Name</b>	<i>COVID-19</i>	<b>Country affected</b>	<b>Namibia</b>
<b>Date &amp; Time of report</b>	<i>17 April 2020 20:00</i>	<b>Investigation start date</b>	13 March 2020
<b>Prepared by</b>	<i>Surveillance Team</i>		

**Date of outbreak declaration in Namibia: 14 March 2020.**

**1. SITUATION UPDATE / HIGHLIGHTS**

- Hon. Minister of Health and Social Services conducted a support visit to the PHEOC today
- No new confirmed case was reported in the last 12 days (5 – 17 April 2020).
- Cumulatively, 16 confirmed cases have been reported in the country, to date.
- Six (6) confirmed cases have recovered and discharged, to date
  - Three (3) new recoveries recorded today
- Supervised quarantine for all Namibians arriving from abroad for 14 days is ongoing.
- The lockdown has been extended until 4 May for entire country, as announced on 14 April 2020 by His Excellency, the President of the Republic of Namibia
  - All borders will remain closed except for essential/critical services and humanitarian support to the response.
  - All other prevention measures are applicable to the entire country

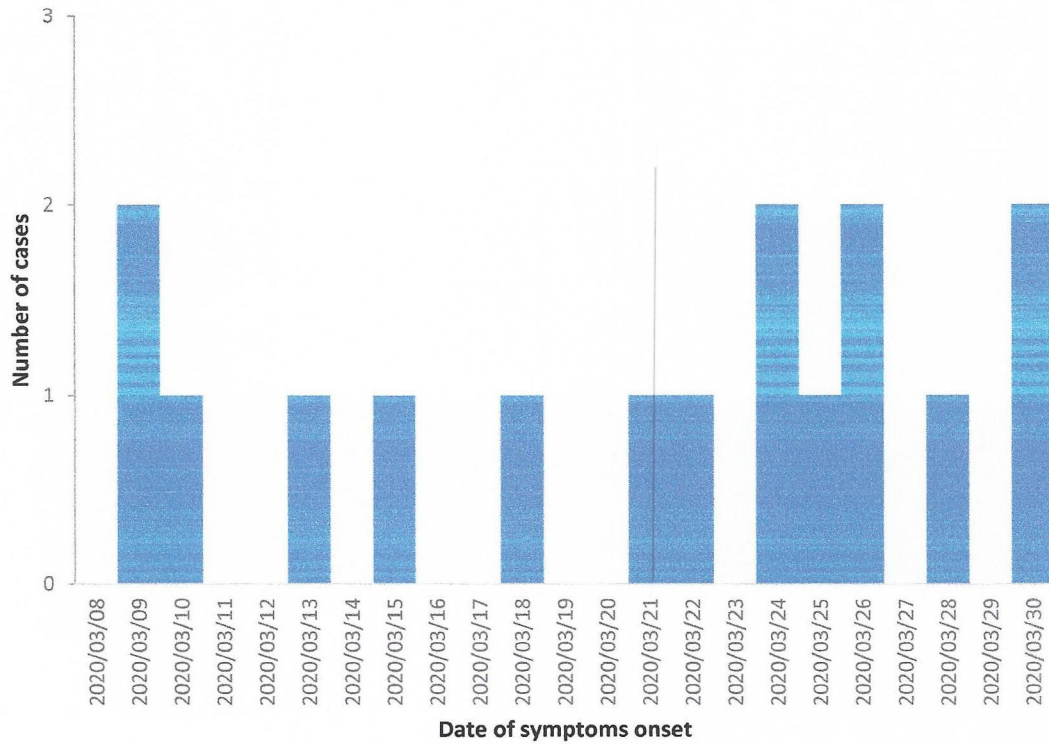
**2. BACKGROUND**

**Description of the latest cases**

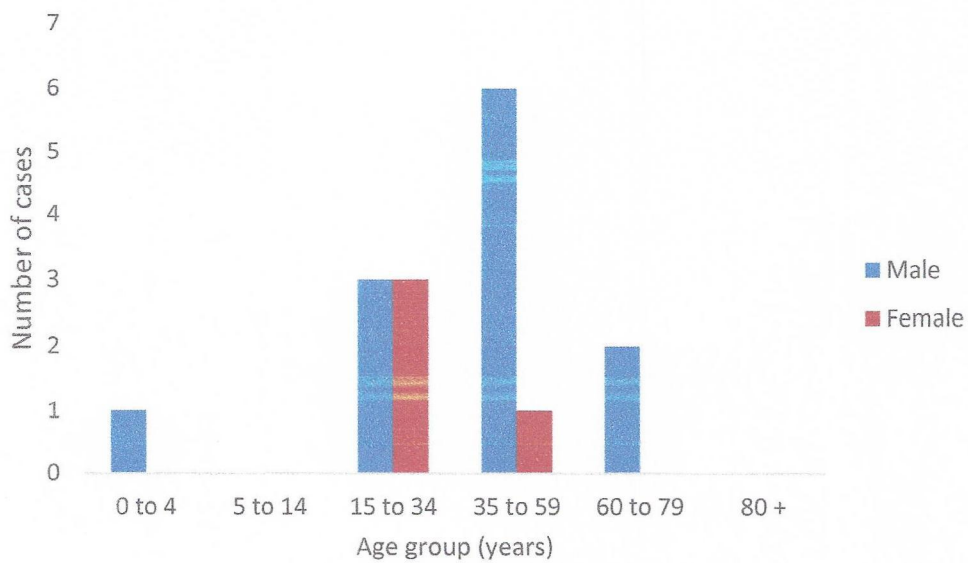
- **Index cases:** Two confirmed cases of COVID-19 were reported in Windhoek district on 13 March 2020. The married couple; a 35-year-old male and a 25-year-old female, arrived from Madrid, Spain on 11 March 2020.
- Total number of imported cases currently stands at 13 and 3 cases local transmission.
- There is no evidence of community transmission in the country at the moment.

**Table 1: Confirmed cases by region as of 17 April 2020**

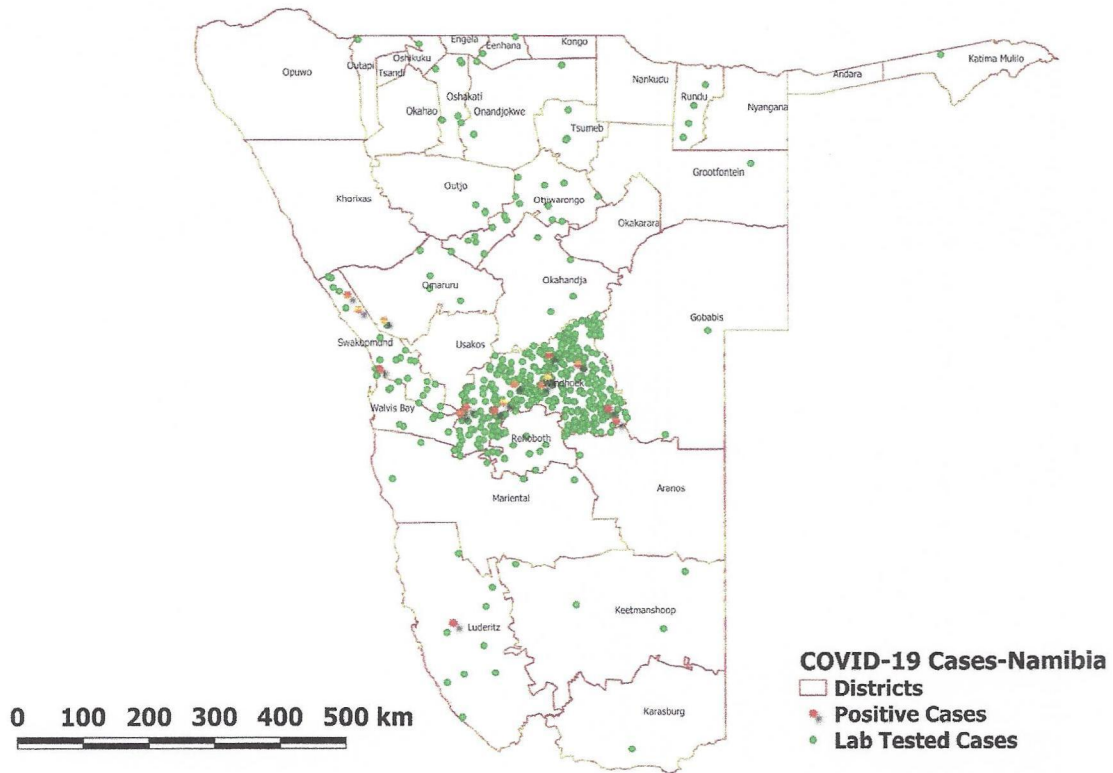
<b>Reporting region</b>	<b>Total Cases</b>	<b>New cases</b>	<b>Active cases</b>	<b>Recovered</b>	<b>Death</b>
Khomas	11	0	8	6	0
//Karas	1	0	1	0	0
Erongo	4	0	4	0	0
<b>Total</b>	<b>16</b>	<b>0</b>	<b>13</b>	<b>6</b>	<b>0</b>



**Figure 1: Epi-curve for COVID-19 confirmed cases in Namibia as of 17 April 2020**



**Figure 2: Age and sex for COVID-19 confirmed cases in Namibia as of 17 April 2020**



*Figure 3: Suspected and confirmed COVID-19 cases in Namibia per District, 17 April 2020*

### 3. PUBLIC HEALTH ACTION / RESPONSE INTERVENTIONS EPIDEMIOLOGY & SURVEILLANCE

- **Case definitions as of 20 March 2020:**

**Suspect case:**

A. A patient with acute respiratory illness (fever and at least one sign/symptom of respiratory disease, e.g., cough, shortness of breath), AND a history of travel to or residence in a location reporting community transmission of COVID-19 disease during the 14 days prior to symptom onset;

OR

B. A patient with any acute respiratory illness AND having been in contact with a confirmed or probable COVID-19 case in the last 14 days prior to symptom onset;

OR

C. A patient with severe acute respiratory illness (fever and at least one sign/symptom of respiratory disease, e.g., cough, shortness of breath; AND requiring hospitalization) AND in the absence of an alternative diagnosis that fully explains the clinical presentation.

**Probable case:** A suspect case for whom testing for COVID-19 is inconclusive. Inconclusive being the result of the test reported by the laboratory

**Confirmed case:** A person with laboratory confirmation of COVID-19 infection, irrespective of clinical signs and symptoms.

**Active surveillance suspected case definition**

A patient diagnosed with Upper/Lower Respiratory Infection (Mild or Severe) presenting any of the following signs and symptoms: cough, sore throat, fever, chills, myalgia/body pains or shortness of breath.

- **Surveillance activities**
  - Daily pillar and intra-pillar discussions are held to deliberate daily progress, gaps and way forward;
  - Call centre continue operations for 24 hours per day.
  - Data entry is ongoing and real data dashboard is completed to be launched early next week.
  - Active case finding is currently underway in Khomas, Erongo and Kharas regions, aimed to look for possible community transmission.
  - Contact tracing is ongoing (see table 2)
  - People under mandatory quarantine are being monitored daily (see table 3)
  - Testing will expand to include outpatients with symptoms (any one of cough, sore throat, fever, chills, myalgia/body pains or shortness of breath)

**Contact tracing Summary**

**Table 2: National contacts tracing summary as of 17.04.2020**

Variables	Contact risk level			
	High	Medium	Low	Total
Total Number of contacts listed (potential)	67	48	118	233
Total Number of contacts identified	67	48	102	217
Total Number of active contacts (being followed)	14	5	5	24
Number of contacts monitored/followed in the last 24hrs	14	5	5	24
Total number of Contacts completed 14-days follow up	50	40	92	182
Total Number of contacts that developed signs & symptoms	23	6	7	36
Total Number of contacts tested positive	3	1	0	4
*Total Number of contacts tested without signs and symptoms	10	1	4	15
© Total Number of contacts lost to follow up	0	2	5	7
Total number of Contacts never reached	0	0	16	16

\*Number of contacts without signs & symptoms tested. One tested positive.

© Seven contacts are lost to follow up, all are non-Namibians and have travelled back to their countries.

**Table 4: Number of people in mandatory quarantine facility as of 17.04.2020**

Region	Newly quarantined 24hrs	Cumulative number of people	Number of people in quarantine now	Number of people discharged
Ohangwena	0	14	12	2
Hardap	0	40	0	40
Otjozondjupa	0	100	39	61
Khomas	5	149	20	129
Zambezi	4	92	24	68
//Karas	22	26	26	0
<b>Total</b>	<b>31</b>	<b>421</b>	<b>121</b>	<b>300</b>

**LABORATORY INVESTIGATIONS**

- As of 17 April 2020, a total of 5 COVID-19 specimens were recorded for testing (64 re-tests to see if the cases have recovered) in the two laboratories (NIP and Path Care) as per table below:

**Table 5: COVID-19 specimens recorded at NIP and Path care Laboratories as of 17.04.2020**

As of 17/04/2020	Laboratory			Total
	NIP	Path care	South Africa	
Total sample received by the Laboratory	413	185	-	598
Total sample tested	319	180	-	499
Total results received	319	180	-	499
Total sample re-tested	64	0		64
Total results positive	9	6	*1	16
Total results negative	310	174	-	484
Total sample discarded	30	2	-	32
Total results pending	4	0	-	4
Total results inconclusive/indeterminate	0	0	-	0
@Total new suspected cases in last 24 hours	21	0	-	21

\*1 Patient specimen collected and tested in South Africa, he travelled back before results came out

@ Total new suspected cases laboratory results received within 24 hours

**COORDINATION AND LEADERSHIP:**

- Daily feedback meetings between pillar leads, coordination team and Incident manager ongoing, to share daily accomplishments and to address key challenges
- Efforts to increase isolation and quarantine facilities are ongoing.
- Finalizing needs assessment and integrated capacity training plans for the responders at National and regional levels.
- Plans to initiate National Sentinel Surveillance have been discussed and agreed with the Technical Operations Cluster (Case Management, IPC, Surveillance and National laboratory and it was agreed that testing for Seasonal Influenza will start once the laboratory receives the probes and primers.

- Consolidating IMS/EOC organogram and harmonizing SOPs and TORs from all thematic pillars for submission to IM and senior management.
- National Health Emergency Management Committee meeting on COVID-19 held on 17 April 2020

## **CASE MANAGEMENT**

- Out of the 16 cumulative confirmed cases, 3 recovered, and have been discharged, after testing negative for COVID-19 at 48 hours interval.
- The other 13 confirmed cases are in stable condition and all are asymptomatic.
- Conversion of casualty department at Windhoek Central Hospital (WCH) into a highly infectious referral ICU underway.
- A 12-bed Isolation Unit has been constructed at WCH, awaiting inauguration.
- Ramatex renovation underway to be repurposed as an isolation facility
- Katutura State Hospital (KSH) TB ward being re-purposed into a COVID-19 ward.
- Four Private hospitals in Windhoek (Mediclinic, Lady Pohamba, Rhino Park, and Roman Catholic private hospital) have been designated as the private hospitals for the response of COVID-19 with a combined total of 8 ICU beds and 32 beds for moderate to severe cases.
  - COVID-19 patients with health insurance cover are eligible to access care in any of the 4 designated facilities
- Training of Health care workers (from different wards and from private facilities) on case management and IPC is conducted daily at WCH, KSH, and Robert Mugabe Clinic.
- Bi-weekly ZOOM training sessions for Health Care Workers is ongoing.
- Plan to visit Regions to assess readiness is underway.

## **LOGISTICS:**

- Facilitation of the allocation of quarantine facilities in the country and transport for discharged people from quarantine facilities is ongoing.
- Distributed a total 1256 PPE to regions,
- Provision of commodities' specifications and verification for procurement is being done regularly
- Seventy-eight personnel (23 medical interns and 55 medical graduates) awaiting appointment letters to assist in the response

## **RISK COMMUNICATION AND COMMUNITY ENGAGEMENT:**

- The communication hub continues to give updates on COVID-19 and also clarify miscommunications on a daily basis this is done concurrently with the social media updates.
- Distribution of printed IEC materials to the regions is ongoing.
- A mass media campaign on lockdown has commenced with updates of previously produced materials on lockdown.
- Media cards with messages on why an extension of a lockdown is developed and shared on social media.
- The RCCE is discussing the impact of COVID-19 on different thematic social welfare areas such as stigma & discrimination, GBV, child rights etc. The idea is to identify the appropriate messages to targeted groups.
- The RCCE continues to share messages on Covid-19 prevention measures

## **PSYCHOSOCIAL SUPPORT SERVICES:**

- Health education, psychosocial support and post counselling services to people under quarantine, COVID-19 confirmed cases and their families are ongoing
- Daily orientation of regional social workers on their role in the COVID-19 response continues in order to guide them in activities to be conducted.
- Health education, psychosocial support services provided, as well as food and other material distributed at places where persons in need of shelter are placed is ongoing.
- MTC continue to provide lunch for the persons without shelter at the two sites in Windhoek
- Total of 160 persons in need of shelter still to be placed, due to the fact that they refused to be moved. Consultation with City of Windhoek is ongoing.
- Assessment of persons in need of shelter commenced on 16 April and will continue until 20 April 2020.
- Conducted and ongoing consultative meetings with the Regional Governor and CEO of the City of Windhoek on the planning for services to persons in need for shelter after the COVID-19 outbreak.

## **POINTS OF ENTRY:**

- The roadblock of Okahandja-Otjiwarongo has been to be moved out of town as it was too closed to Okahandja town.
- Provisional tippy taps are being installed at all the roadblocks around Khomas.
- Continuing to work on the training content of the planned integrated training for COVID-19 response.
- A concept note on establishing truck ports in major towns and along the borders have been finalized.

#### 4. CHALLENGES

- Inadequate and at some places lack of isolation units at health facilities and at points of entry in the regions.
- Unavailability of probes and primers for NIP laboratory to start testing for Seasonal Influenza (H1N1) from beginning May 2020.

#### 5. RECOMMENDATIONS

- Establish fully equipped isolation units at health facilities and at points of entry in the regions.
- Fast track procurement process laboratory testing kits (probes and primers) for Seasonal Influenza (H1N1) testing
- Continue to build capacity of response workers.

Approved:

  
\_\_\_\_\_  
Incident Manager  
Date: 17.04.2020

  
\_\_\_\_\_  
Secretariat